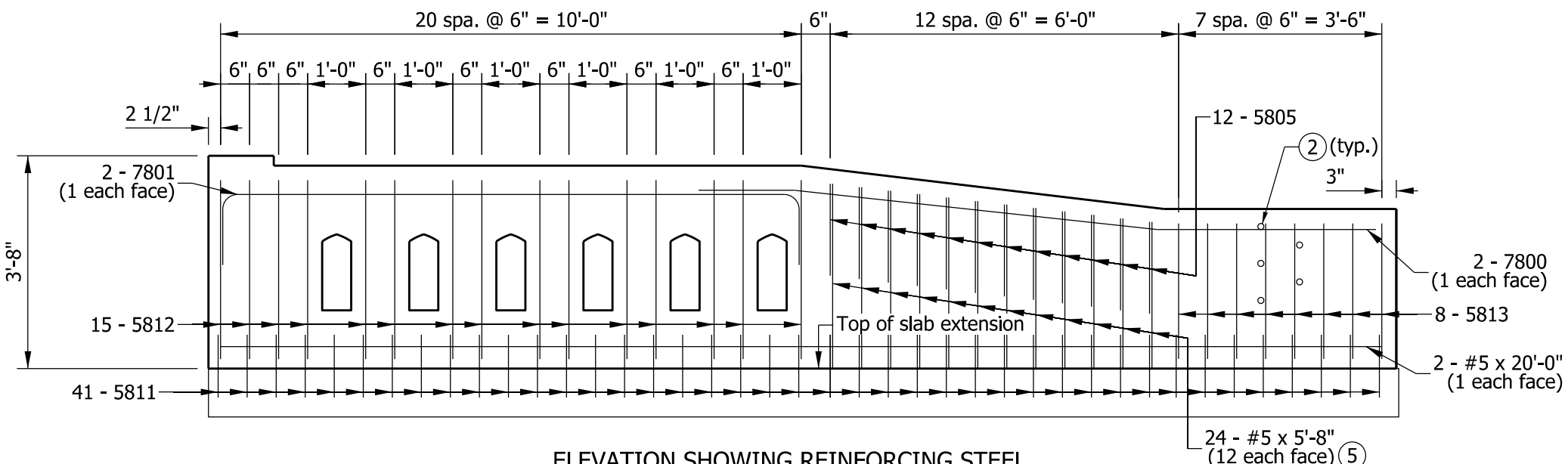
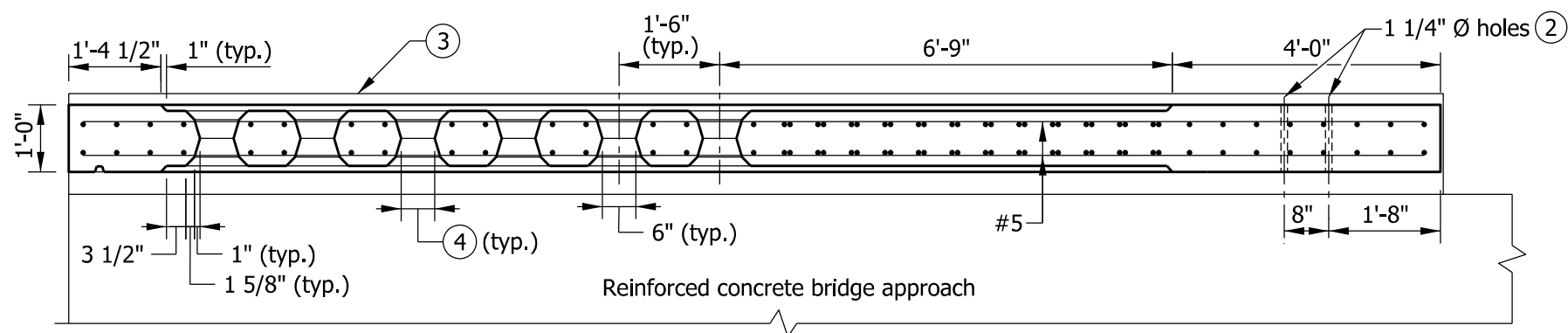


ELEVATION

END BENT
PILASTER (typ.)



ELEVATION SHOWING REINFORCING STEEL



SECTION E-E

NOTES

1. See Standard Drawing E 706-TTXX-02 for sections and reinforcing-bar diagrams.
- (2) Holes for attachment of guardrail transition type TGB. See Standard Drawing E 706-CBRT-04 for details.
- (3) RCBA extension for bridge railing transition type TTX. See Standard Drawing E 609-TBAE-02 for details.
- (4) Window opening. See Standard Drawing E 706-BRTX-02 for details.
- (5) See Standard Drawing E 706-TTXX-02 for reinforcing-bar cutting diagram.

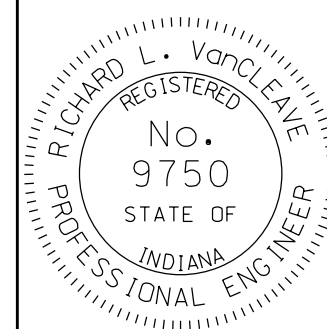
BILL OF MATERIALS			
Quantities are for one concrete bridge railing transition type TTX			
EPOXY-COATED REINFORCING STEEL			
MARK OR SIZE	NO. OF BARS	LENGTH	WEIGHT
7800	2	11'-9"	
7801	2	12'-4"	
Total #7			98 LBS
5805	12	4'-8"	
5811	41	4'-0"	
5812	15	8'-6"	
5813	8	7'-0"	
#5	2	20'-0"	
#5	12	5'-8"	
Total #5			538 LBS
Total Epoxy-Coated Reinforcing Steel			636 LBS
MISCELLANEOUS			
Concrete, Class C			2.0 CYS
Surface Seal			149 SFT

INDIANA DEPARTMENT OF TRANSPORTATION

CONCRETE BRIDGE RAILING
TRANSITION, TTX

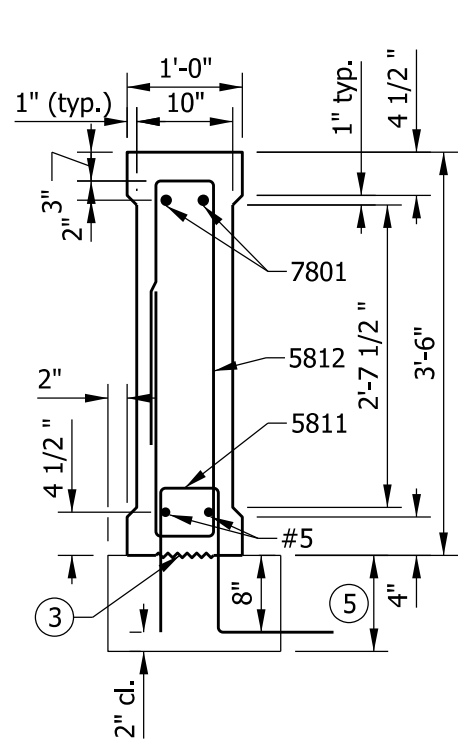
SEPTEMBER 2012

STANDARD DRAWING NO. E 706-TTXX-01

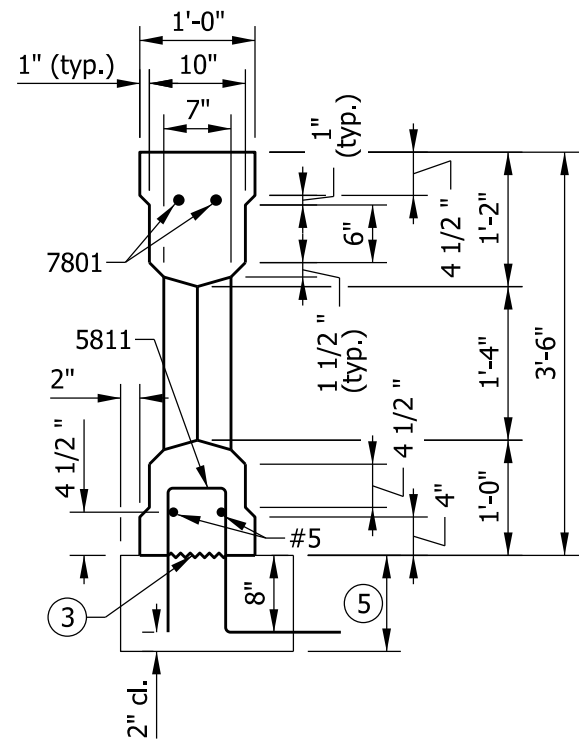


/s/ Richard L. VanCleave 09/04/12
SUPERVISOR, ROADWAY STANDARDS DATE

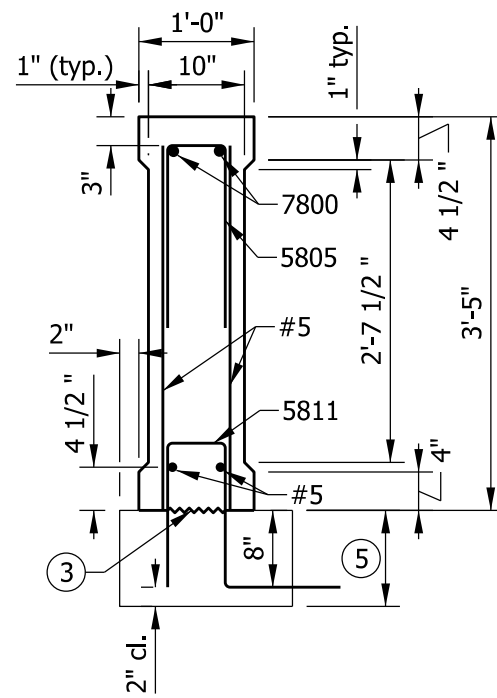
/s/ Mark A. Miller 09/04/12
CHIEF ENGINEER DATE



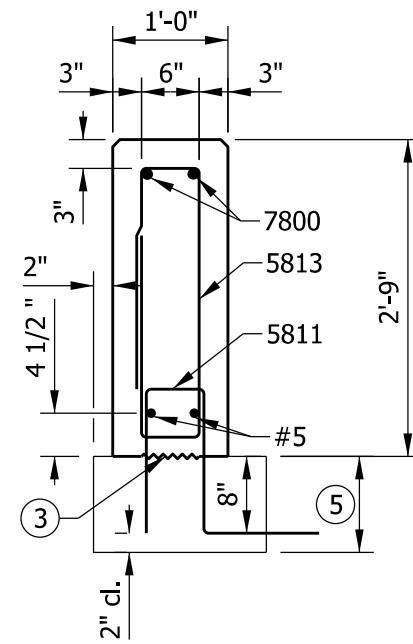
SECTION A-A



SECTION B-B



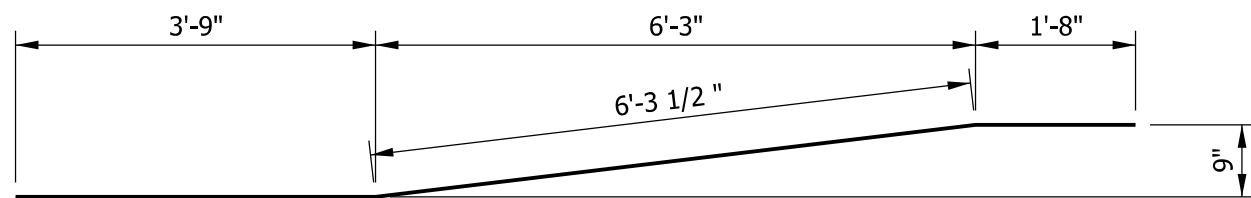
SECTION C-C



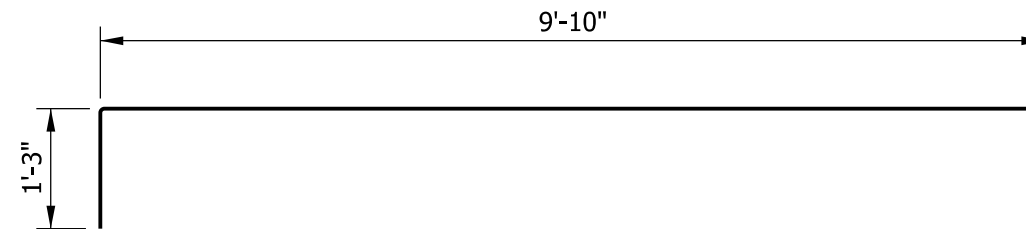
SECTION D-D

NOTES

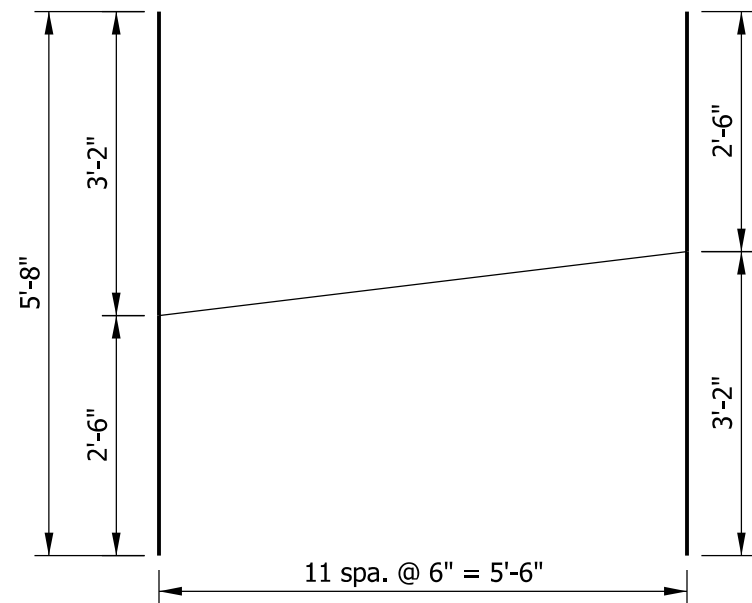
1. See Standard Drawing E 706-TTXX-01 for elevations and plan.
2. All chamfered edges shall be 3/4".
3. Construction joint type A. See Standard Drawing E 702-CJTA-01 for details.
4. See Standard Drawing E 703-BRST-01 for reinforcing-bar bending details and notes.
5. RCBA extension for bridge railing transition type TTX. See Standard Drawing E 609-TBAE-02 for details.



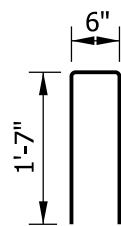
7800 x 11'-9"



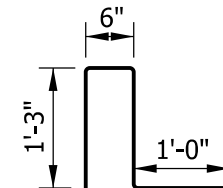
7801 x 12'-4"



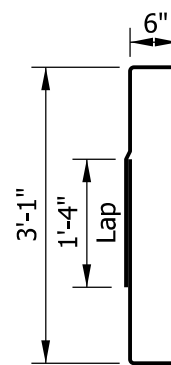
12 - #5 x 5'-8"
CUTTING DIAGRAM



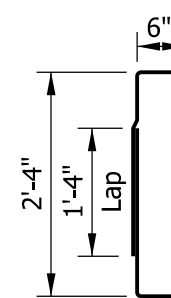
5805 x 4'-8"



5811 x 4'-0"



5812 x 8'-6"



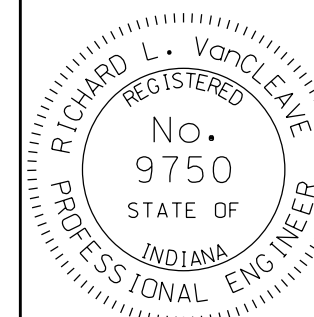
5813 x 7'-0"

INDIANA DEPARTMENT OF TRANSPORTATION

CONCRETE BRIDGE RAILING
TRANSITION, TTX

SEPTEMBER 2012

STANDARD DRAWING NO. E 706-TTXX-02



/s/ Richard L. VanCleave 09/04/12
SUPERVISOR, ROADWAY STANDARDS DATE

/s/ Mark A. Miller 09/04/12
CHIEF ENGINEER DATE